

# Project Management







# Proven marks 10 years of growth and leadership

*Proven Project Management is celebrating a decade of delivering impactful projects across Western Australia's commercial, retail and education sectors.*

Marking its 10-year anniversary this August, Proven Project Management has grown from a specialist service offering within Rowe Group to a leading client-side project management firm across a multitude of sectors.

Formally launched as a standalone brand in 2015, Proven's origins date back to 1992 when Rowe Group (then Greg Rowe & Associates) first began offering project management services.

The brand established its name ahead of the delivery of the landmark \$800 million Karrinyup Shopping Centre redevelopment and has since built a strong reputation for delivering complex projects with client trust and consistency.

To date, Proven has successfully delivered close to 100 projects across Western Australia for major clients including AMP Capital, Woolworths and Curtin University.

Now, as the business enters its next chapter, Proven is undergoing a leadership transition that signals continued innovation and strength.

Founder Greg Rowe maintains his position as a director, however, continues to step back from the day-to-day operations of the business, handing the reins to a new generation of leaders, Project Directors Taylor Conway and Gavin Tucker.



*Greg Rowe, Director, on site at Wallis Drilling in late May.*

Mr Conway brings a strong operational focus and client-first mindset to the role, with a wealth of projects under his belt. Since joining Proven in 2021, he has led a range of significant land development, industrial, government and infrastructure developments across WA.

"We're immensely proud of what Proven has accomplished in the past 10 years," Mr Conway said. "Our growth has been built on strong relationships, deep sector knowledge, and the ability to adapt and deliver across a wide range of project types."



*Taylor Conway and Gavin Tucker, Project Directors and Associates at Proven Project Management.*

Mr Tucker, a seasoned project manager with over 15 years of experience across retail, commercial, residential and education sectors, brings deep expertise in end-to-end project delivery across the construction lifecycle, including playing a pivotal role in the Karrinyup Shopping Centre Redevelopment.

"Our leadership structure is built on mutual respect and complementary expertise," he said. "Together, we're focused on evolving with the industry and continuing to deliver the trusted service we're known for."

A major driver of Proven's success and a key focus for the business moving forward is its commitment to education-sector projects. With more than 50 education-related projects under its belt, Proven has carved out a strong reputation as a leader in the delivery of school and university infrastructure.

Among its most significant and enduring partnerships is its relationship with Curtin University. In the last three years, Proven has completed 25 projects across Curtin's Bentley and Kalgoorlie campuses, with a further 21 currently underway.

These projects span architectural fit-outs and refurbishments, services upgrades, and public infrastructure and landscaping works.



*With over 25 projects delivered and 21 more underway, Proven is proud to support Curtin University's ongoing transformation across its Bentley and Kalgoorlie campuses, driving innovation through fit-outs, asset upgrades, and public infrastructure.*

"We're proud to play a role in shaping educational environments that serve thousands of students and staff," Mr Conway said. "Curtin University has been a valued client for many years, and we're looking forward to supporting their next phase of development."

Curtin University's Capital Program forecasts more than \$600 million in capital expenditure over the next five years,

positioning Proven well to continue its involvement in one of WA's largest tertiary education infrastructure projects.

Proven has also delivered a significant number of projects on behalf of AngliSchools (formerly Anglican Schools Commission) and is currently delivering a three-stage redevelopment at St Mark's Anglican Community School in Hillarys.

The project includes a new maintenance and student amenity building, a contemporary sporting hall, and the conversion of an existing sports pavilion into innovative teaching spaces.



*Proven is partnering with AngliSchools on a transformative three-stage redevelopment at St Mark's, delivering new student facilities, a sporting hall, and upgraded learning spaces to support the next generation of education.*

Proven brings a structured yet flexible approach to each project, whether working within operational school campuses or managing complex redevelopments.

"In the education sector, you're often working in live environments and under tight timeframes," Mr Tucker said. "These projects highlight our ability to tailor delivery to the unique needs of each educational environment."

"What sets Proven apart is our attention to detail, stakeholder engagement and ability to manage complexity," he added.

As the construction sector continues to navigate regulatory changes, sustainability pressures, and skills shortages, Proven sees its integrated, relationship-driven approach as a critical advantage.

"Our ability to provide clarity and confidence for clients is more important than ever," Mr Conway said. "We take pride in being a reliable partner, whether it's a multi-stage school redevelopment or a university refurbishment."

Looking ahead, Proven's leadership team remains committed to the business' founding values while embracing new opportunities to grow, adapt and lead. "Our next chapter is about building on the solid foundations laid over the past decade," Mr Conway said.

As Proven prepares to mark its 10-year milestone with a celebratory event later this year, its achievements across a multitude of sectors including retail, commercial, land development, industrial and education, showcases its strong leadership and sector adaptability.

"With the support of our team, clients and partners, we're excited for what the future holds as we celebrate a successful ten years that's been," Mr Conway added.



# Where It All Began

## Port Kennedy Business Park

Then operating as Greg Rowe & Associates, we delivered our first major project management commission with the Port Kennedy Business Park, a 65-hectare industrial and commercial estate that laid the foundation for our future.

Over five years and nine land releases, we managed everything from subdivision approvals to civil works and infrastructure delivery. The project set a new benchmark for business park design in WA and firmly established Rowe Group's reputation for delivering complex, high-impact developments.



1992



## Growth in the Education Sector

While we had delivered several smaller education projects prior, it was during the early 2000s, as part of Greg Rowe & Associates, that our involvement in the sector truly gained momentum. Our long-term partnership with John Septimus Roe Anglican Community School in Mirrabooka and Beechboro became a cornerstone of this growth.

Over 15 years, we managed the design, refurbishment, and construction of major campus facilities including learning centres, performing arts spaces, science labs, and sports amenities, all while navigating live school environments, funding schedules, and academic calendars.

2000s

## Laying the Groundwork

By the early 2010s, Greg Rowe & Associates's project management division had delivered significant projects across WA, from residential subdivisions in Greenfields and Gwelup to landmark commercial builds like Halcyon House in West Perth.

We had already built strong relationships with educational institutions including the Australian Islamic College and St John's Lutheran Church, while managing major retail redevelopments such as Rockingham City and Southlands Shopping Centre.

With nearly two decades of experience under our belt, the momentum was building. Then came the game-changer, Karrinyup Shopping Centre.



2010s

2015



# A Defining Project for Proven

## Karrinyup Shopping Centre Redevelopment

**Client:** AMP Capital Investors Limited

**Cost:** \$800m

**Location:** Karrinyup

**Role:** Project Manager and Superintendent

Proven Project Management was appointed as Project Manager and Superintendent to lead the \$800 million transformation of Karrinyup Shopping Centre, one of Perth's most ambitious retail redevelopments.

From procurement strategy and consultant coordination to design management, contract administration, and authority liaison, our team oversaw every stage of delivery. We led a complex ECI process with a Tier 1 contractor and managed over 40 consultants to meet a dynamic brief.

Amidst significant market shifts and COVID-related challenges, we successfully managed multiple program changes with no extension of time claims and maintained budget certainty. The result is a landmark retail, lifestyle and residential precinct, home to major international brands, entertainment venues, al fresco dining, and 300+ apartments.





# Project Managers

## Who **Make the Difference**

*Our team of project managers excel at navigating complexity to deliver clarity and purpose at every stage.*

*We combine commercial insight with a hands-on approach, underpinned by deep sector expertise, to create confidence in even the most challenging projects.*

*Across education, retail, industrial and infrastructure sectors, we bring a rare mix of technical precision and human understanding to achieve outcomes that matter.*

*More than delivering projects, we forge trusted partnerships built on integrity, adaptability and a commitment to excellence, relationships that endure well beyond completion.*



**Gavin Tucker**

**Associate | Project Director**

With over 18 years of experience spanning retail, commercial, residential, and government sectors, Gavin brings end-to-end project delivery expertise to Proven. A qualified construction manager, he thrives in high-pressure environments, managing every phase from feasibility through to completion with clarity and precision.

Gavin played a pivotal role in the \$800 million Karrinyup Shopping Centre Redevelopment, where his leadership and technical insight helped navigate complexity, stakeholder coordination, and delivery at scale.



**Taylor Conway**

**Associate | Project Director**

Taylor brings a decade of experience in land development, civil infrastructure, and planning-led project delivery. With qualifications in Urban and Regional Planning, he leads complex projects with strategic foresight and operational rigour.

Since joining Proven in 2021, Taylor has delivered residential, industrial, and government projects across WA, including large-scale subdivisions, environmental remediation, and infrastructure upgrades. His hands-on approach, commercial acumen, and deep understanding of approvals and implementation make him a trusted partner for clients navigating complex developments.





**Greg Rowe**

**Founder & Director**

As founder of Rowe Group and Proven Project Management, Greg brings decades of experience in architecture, planning, and project delivery. Known for his strategic thinking and creative solutions, Greg continues to guide the business with vision, commercial insight, and a deep understanding of client needs.



**George Hajigabriel**

**Director**

A founding member of Rowe Group, George is a trusted senior advisor across planning and project management. His leadership, industry knowledge, and ability to navigate high-level and complex projects continue to shape the firm's success.



**Rod Dixon**

**Director**

Rod brings over 30 years of experience in planning and development, with a focus on strategic urban growth and land development. He is known for leading complex, multi-staged projects and delivering practical, long-term outcomes for clients and communities.





# What We Do

At Proven Project Management, we deliver projects that shape better places, with clarity, care, and confidence. From concept to completion, we turn complexity into progress through expert leadership, creative solutions, and trusted relationships.

## Sectors We Work In

We've successfully delivered projects across:



Retail



Education



Commercial



Industrial



Residential



Government



Land

Each sector presents unique challenges, our experienced team brings the insight, structure, and sector-specific knowledge to deliver smart, confident outcomes every time.

## From Concept to Delivery

We apply best-practice project management, tailored to each project's needs:



Defined project purpose



Thorough project scoping and planning



Informed risk mitigation



Accurate project budgeting



Uncompromising quality control



Efficient time management

## Why Proven?

### Understanding

We take time to understand your goals and investment drivers, ensuring aligned, informed decisions from day one.

### Reliability

Our senior leaders stay involved throughout, providing consistent guidance and ownership of outcomes.

### Responsiveness

We remain proactive and agile, scaling support and solving challenges quickly to keep momentum strong.

# Projects that Defined Us

Over the past decade, we've navigated the complexities, challenges and opportunities that come with delivering great projects. Each one has helped shape who we are, refining our processes, sharpening our instincts, and strengthening the trusted relationships we build with our clients. These partnerships are at the heart of everything we do. As a team, we continue to draw from a decade of experience and deep sector insight to manage every aspect of a project with care and clarity. From defining purpose and planning with precision, to anticipating risk, balancing budgets, and maintaining uncompromising quality, we remain focused on delivering outcomes that stand the test of time.

## Midland Saleyards Redevelopment

**Client:** Aigle Royal Group

**Cost:** \$70m (Stage 1) \$20m (Stage 2)

**Location:** Mindland

**Role:** Project Manager and Superintendent



### Stage 1

Proven Project Management was appointed by Aigle Royal Group to deliver Stage 1 of the Midland Saleyards redevelopment, transforming a 14-hectare former livestock site into a landmark commercial and light industrial precinct. We managed forward works, infrastructure, and the construction of the Australia's largest Bunnings Warehouse, along with large-format retail tenancies, a childcare centre, and significant public artworks. Our role spanned project management, design coordination, contract administration, and tenancy delivery, ensuring seamless integration across multiple contractors and disciplines.

### Stage 2

Following the success of Stage 1, Aigle Royal entrusted Proven with Stage 2, a further 7,500m<sup>2</sup> retail development requiring environmental remediation and careful planning. We oversaw feasibility, infrastructure upgrades, tenancy coordination, and construction in a live commercial setting. By managing complexity with care and clarity, we helped future-proof the precinct and reaffirmed our role as a valued delivery partner.





## Expanding a Retail Giant

**Client:** 7-Eleven Pty Ltd

**Cost:** \$1.6m (circa per store)

**Location:** Various sites across the Greater Perth region

**Role:** Superintendent

Over the past decade, Proven Project Management has supported 7-Eleven with the successful rollout of multiple new stores across Greater Perth. Our long-standing relationship has been built on delivering consistency, quality, and agility, ensuring each location opens on time and to specification.



*7-Eleven Banksia Grove*

Acting as Superintendent, we've overseen the full delivery lifecycle, from detailed design coordination and procurement to on-site quality assurance and fit-out. We've worked closely with 7-Eleven Operations to align project schedules with staffing, merchandising, and market demand, ensuring a smooth handover and launch every time.

Service station projects come with unique challenges, including tight construction timelines, soil remediation, and complex authority approvals. Our proactive risk management and deep understanding of these technical hurdles have been instrumental in delivering successful

*7-Eleven Baldavis*



*7-Eleven and Head Office For Perth, Ascot*

outcomes. We've helped navigate excavation issues, long utility lead times, and traffic modifications, always keeping store openings on track.

This ongoing partnership is a testament to Proven's ability to deliver under pressure, resolve complexity, and support national brands through regional growth.



*7-Eleven Bassendean*



*7-Eleven Thornlie*





# Three Projects, One Proven Relationship

**Client:** Fabcot Pty Ltd  
**Cost:** \$25m (circa per store)  
**Locations:** Butler, Banksia Grove and Mt Pleasant  
**Role:** Project Manager and Superintendent

Over the years, Proven Project Management has proudly partnered with Fabcot, the property development arm of Woolworths, to deliver three major retail centres across Western Australia: Butler Central, Banksia Grove, and Mt Pleasant. Each project came with its own challenges, from complex staging and tight timeframes to value engineering and stakeholder coordination, but our hands-on, strategic approach ensured their successful delivery.

At Butler Central, we managed a multi-stage development featuring a Woolworths Supermarket, Dan Murphy's, and 30 specialty tenancies. The complex sequencing of separable portions and coordination of a 27,000m<sup>2</sup> future pad site demonstrated our agility and planning strength.

In Banksia Grove, we delivered a streamlined retail centre with 12 specialty tenancies, providing a total of 6,000m<sup>2</sup> of new retail floor space.

Meanwhile, the Mt Pleasant development added 2,500m<sup>2</sup> of premium retail space, including two levels of basement parking, and was delivered under a design and construct model that optimised value and efficiency.

These projects strengthened our understanding of retail delivery, tenant coordination, and the operational priorities of large-format retail clients. More than just delivering new shopping destinations, they laid the foundation for a trusted and enduring relationship with Fabcot.



Woolworths Butler Central



Woolworths Banksia Grove



Woolworths Mt Pleasant





## DFO Perth Development

**Client:** Vicinity Centres

**Cost:** Confidential

**Location:** Perth Airport

**Role:** Project Manager



Proven Project Management was appointed to deliver Perth's first DFO for Vicinity Centres, a joint venture with Perth Airport Pty Ltd. From design development to procurement and construction, we guided the project through complex approval pathways, leveraging our knowledge of PAPL's requirements to keep 115 tenancy fitouts on track.

Delivered ahead of schedule and on budget, the 24,000m<sup>2</sup> retail hub includes premium outlets, specialty stores, dining options, and public spaces. Our role ensured seamless integration of high-level finishes and construction activity within a live airport environment, demonstrating Proven's strength in managing complexity and precision at scale.







Successfully delivered Dufry's flagship duty-free upgrade at Perth Airport back in 2019, completed in stages to ensure seamless trading during construction.

## Dufry Duty Free Perth Airport

**Client:** Dufry/Avolta  
**Location:** Perth Airport  
**Role:** Project Manager and Superintendent

Proven Project Management has built a strong and ongoing relationship with global travel retailer Dufry (now Avolta), having delivered several high-profile duty-free store upgrades at Perth Airport since 2019. Our team was initially engaged to oversee the fit-out of a 1,200sqm departures store, completed in carefully staged works to ensure uninterrupted trading and passenger flow.

The project included the creation of new retail identities, Perth Street Market and Collections, enhancing the retail offering with modern, brand-aligned experiences. Proven's role extended across project management, stakeholder liaison, and coordination with Perth Airport to meet stringent operational requirements in a live terminal environment.

Following the success of the initial works, our relationship with Dufry has continued into 2025, with Proven again appointed to manage significant store renovations across Terminals 1 and 3. These works are part of Avolta's long-term vision to transform Perth Airport's retail experience through sustainable design, new digital and sensory experiences, and a broader, locally inspired product mix.



Currently managing the next phase of Avolta's retail transformation, enhancing passenger experience through bold design, sustainability, and innovation.





## A Lasting Partnership in Retail Transformation

Our relationship with Rockingham Shopping Centre and Vicinity Centres spans over 15 years, beginning when we were known as Greg Rowe & Associates. What started as a transformative retail and cinema refurbishment in 2008 has grown into a trusted partnership that led us to deliver further upgrades, including the revitalisation of Syren Street and work at DFO Perth in 2018.



### Rockingham Shopping Centre & Cinema Complex (2008)

**Client:** Colonial First State Property Management

**Cost:** \$160m

**Role:** Project Manager and Superintendent

This major redevelopment expanded the centre by approximately 40%, revitalising the precinct through a significant refurbishment and new construction. As project managers and superintendents, our role involved rigorous cost auditing, contractor coordination, and consultant performance optimisation during a competitive construction market.

Our practical understanding of architecture, contractual frameworks, and built form processes ensured minimal delays, enabling the project to meet key milestones. The project remains widely recognised for its quality and contribution to the vibrancy of the Rockingham retail precinct.



### Stage 4 Expansion – Syren Street (2014–2016)

**Client:** Vicinity Centres

**Cost:** \$6.3m

**Role:** Project Manager and Tenancy Coordinator

Building on our earlier success, we were appointed by Vicinity Centres to deliver the Stage 4 expansion, including four new food and beverage tenancies and a streetscape upgrade to Syren Street.

Our scope included base build management, tenancy coordination, and implementation of a detailed landscape masterplan. With staged completions between April and August 2016, we ensured leasing obligations were met, trading deadlines achieved, and the public realm was reactivated, creating a vibrant and engaging destination for the community.





St Mark's Anglican  
Community School

Redevelopment

Client:

Anglican Schools Commission

Cost:

\$30m

Location:

St Marks Anglican School, Hillarys

Role:

Project Manager and Superintendant

Proven Project Management is proud to be leading the \$30 million redevelopment of St Mark's Anglican Community School in Hillarys, continuing a long-standing relationship with the Anglican Schools Commission (ASC). Acting as Project Manager and Superintendent, Proven is delivering the project through a staged programme to minimise disruption to school operations. The redevelopment includes a new maintenance and student amenity building, a modern sporting hall, and the adaptive reuse of an



existing sports pavilion into new teaching spaces. These upgrades are being carefully integrated into the school's existing environment and align with the City of Joondalup's precinct plan. The sporting hall is set to be completed in time for the school's 40th anniversary celebrations. Proven continues to work closely with the consultant team on commercial feasibility, programme planning and design resolution for the next stages of this major campus transformation.



John Septimus Roe Anglican Community School



Swan Valley Anglican Community School



Peter Carnley Anglican Community School

John Septimus Roe

Anglican Community School

One of our longest-running education sector relationships, Proven Project Management worked alongside the ASC over a 15-year period to deliver significant upgrades to John Septimus Roe Anglican Community School's Mirrabooka and Beechboro campuses. Our role as Project Manager and Superintendent included the delivery of a broad mix of facilities, from new science centres, performing arts spaces and administration hubs, to a gymnasium, enclosed learning centres, and refurbished libraries and canteens.

Delivered in a live school environment, these projects required exceptional stakeholder engagement, scheduling sensitivity, and detailed programme management to ensure educational operations continued seamlessly throughout. Proven's deep understanding of working within school environments was key to the successful delivery of these major capital works.

Other Key ASC Projects

Proven also delivered key facilities for Swan Valley Anglican Community School and Peter Carnley Anglican Community School. At Swan Valley, we oversaw the development of a landmark Chapel for 350–600 people and a two-storey science building with flexible expansion capacity, balancing budget and design vision through targeted value management. At Peter Carnley, we led the delivery of a multi-stage expansion including primary classrooms, art and music spaces, a senior school, technology building, administration upgrades, and a library. Our ability to manage complexity and fast-track procurement was critical in completing these facilities ahead of the school year. These enduring collaborations reflect Proven's reputation for tailored project delivery and excellence in the education sector.



## Partnering in Progress: Proven & Curtin University

**Client:** Curtin University

**Location:** Curtin University Bentley and Kalgoorlie Campuses

**Role:** Project Manager and Superintendent

With over 50 education projects delivered, Proven Project Management has become a trusted partner in the delivery of university infrastructure across Western Australia. Our longstanding relationship with Curtin University stands as one of our most significant and enduring collaborations. Over the last three years, we have delivered 25 projects across Curtin's Bentley and Kalgoorlie campuses, with 21 more currently underway. Our involvement spans architectural fit-outs, refurbishments, services upgrades, public infrastructure, and landscaping. We are proud to support Curtin's vision for the future of education, delivering spaces that inspire learning and innovation.

### Curtin Stadium Precinct

Proven is overseeing the \$14.8 million redevelopment of the Curtin Stadium Precinct in Bentley. The project integrates the Stadium, Dome, and nearby clubrooms through architectural and landscaping enhancements. With its central location and live operating environment, it requires strategic stakeholder engagement and planning to minimise disruption.



### Curtin Exchange Tenancies

Proven delivered eight unique tenancies within the vibrant Exchange Precinct. Including brands like HEE Sushi, Pretzel, Banh Mizzle, Seoul Brothers, and La Vita Café, these tenancies enrich student life and foster local business engagement. Positioned among classrooms, student accommodation, and hotels, each project required precision delivery in a highly active space.







Curtin Rural Medical School

Delivered in Kalgoorlie as part of the RHMT program, this \$2.8 million facility supports rural clinical training for medical, nursing, and allied health students. Proven managed complex logistics, COVID-era procurement, and reporting under national health funding, helping Curtin expand its regional medical education.



Kalgoorlie Heritage Remediation

Proven led the brickwork restoration of two heritage buildings (c.1903–1907) on the Kalgoorlie campus. Challenges included heritage compliance and remote logistics. Proven's strategic delivery ensures these historically significant structures are preserved for future generations.



Corrosion Flow Loop

This \$1 million collaboration with Chevron and the Curtin Corrosion Centre created a world-class testing facility at Bentley. Proven oversaw the construction of a high-spec lab for advanced corrosion studies. The project was completed in August 2024.

Faculty of Health Sciences Phase 3

Proven delivered the \$3.5 million refurbishment of Buildings 308 & 405, including asbestos removal, live environment constraints, and sensitive research protection. Through strong stakeholder collaboration, the project was delivered without disruption.



EV Charging Rollout

As part of Curtin's 6 Star Green Star-rated community plan, Proven managed the design and rollout of EV charging stations across the Bentley campus, helping the university deliver on its sustainability goals.



Additional Infrastructure Works

Proven Project Management has delivered a wide range of infrastructure upgrades across Curtin University, showcasing its versatility and live-environment expertise. Key works include the reconstruction of the PL1 Carpark with integrated rain gardens, disability access improvements near B610, stadium storage upgrades, and water ingress remediation at the Medical School (B410). Proven also completed the \$3.6 million B106G HVAC system replacement in 2022, balancing complex mechanical integration with uninterrupted building operations. The Fire Detection and EWIS Replacement across multiple Bentley campus buildings followed in 2023, requiring close stakeholder collaboration to maintain safety and continuity. Within the Faculty of Science and Engineering, Proven led complex lab upgrades to support specialised research equipment, such as BAM, Orbitrap, and WAAIF, addressing ventilation, structural, and compliance requirements. The team also managed the construction of the EPS Survey Store with advanced HVAC systems and coordinated Stage 5 of the PCB lighting replacement program, completed efficiently and safely in 2024.

Together, Proven and Curtin are shaping the future of education infrastructure in Western Australia, project by project, campus by campus.



## Australian Islamic College

**Client:** Australian Islamic College

**Cost:** \$6m

**Location:** Dianella, Kewdale and Thornlie

**Role:** Project Manager and Superintendent

Proven Project Management partnered with the Australian Islamic College (AIC) to deliver key infrastructure upgrades across its Thornlie, Dianella, and Kewdale campuses, totalling \$6 million in development. Our role as Project Manager and Superintendent involved overseeing the construction of a two-storey library and theatre at Thornlie, a multi-purpose hall with gym and classrooms at Dianella, and another versatile hall and learning facility at Kewdale. Delivered under Fixed Lump Sum contracts, these projects supported AIC's growing educational and community needs with functional, flexible spaces designed for learning, worship, and school-wide events.



## Minor Works Combined – Murdoch University

**Client:** Murdoch University

**Location:** Murdoch Campus

**Role:** Project Manager and Superintendent

Proven Project Management has delivered a variety of impactful minor works across Murdoch University, demonstrating flexibility and attention to detail. Highlights include the Psychology Clinic expansion (B440), transforming outdated offices into consultation spaces with new finishes, furniture, and security. The Southern Grains Hub involved coordinating innovative soil remediation to support agricultural trials. For the Unusual Pet Vet Refurbishment, we managed the redesign of a small animal hospital into a wildlife ward with new hotboxes, joinery, and reconfigured spaces. Additional projects included office refurbishments such as AQCMP, ITS & Engineering, and assorted upgrades, all tailored to enhance functionality and user experience across campus.







## Sonas Childcare Midland

**Client:** Aigle Royal Group

**Cost:** \$3m

**Location:** Midland

**Role:** Project Manager and Superintendent

Proven Project Management was engaged as Project Manager and Superintendent for the delivery of a new standalone childcare centre within the Midland Saleyards Redevelopment. Built for tenant Sonas Early Learning, the centre accommodates up to 100 children and includes nature play areas, vibrant indoor learning spaces, and a sleep room designed to feel like "under the stars." The project was delivered in collaboration with ADCO and completed successfully in mid-2021.

## St John's Lutheran Church

**Client:** St John's Lutheran Church

**Cost:** \$6m

**Location:** Aberdeen Street, Northbridge

**Role:** Project Manager and Superintendent

Proven Project Management was appointed by St John's Lutheran Church to manage their Northbridge development from design to completion. When the project expanded following a secured anchor tenant, Proven secured revised approvals while keeping construction active through a staged delivery. The team met critical leasing deadlines, overcoming time constraints through weekly planning, coordination, and close stakeholder engagement.







# Halcyon House

**Client:** Woss Group  
**Cost:** \$20m  
**Location:** West Perth  
**Role:** Project Manager and Superintendent

Completed in 2010, Halcyon House was delivered by Greg Rowe & Associates, acting as Project Manager and Superintendent under a Guaranteed Maximum Price contract. This \$20 million, 5-level, 5,000m<sup>2</sup> office development was a five-star green-rated project featuring a freestanding multi-decked car park with direct floor access. Delivered on time and on budget, it became a foundational milestone for what would later evolve into Proven Project Management. The successful outcome set the tone for our reputation in managing complex commercial projects and building enduring client partnerships.

# Capital Square

**Client:** AAIG Corporation  
**Cost:** \$350m  
**Location:** Perth  
**Role:** Project Manager and Land subdivision

Proven Project Management was engaged to manage the complex “super lot” subdivision and coordinate compliance with Development Approval conditions for this landmark mixed-use development on the former Emu Brewery site. The \$350 million Capital Square precinct features three distinctive towers linked by a vibrant mixed-use podium. Now fully complete, the towers include commercial offices and short-term accommodation for Woodside staff. The subdivision required intricate 3D titling and close coordination with Main Roads WA, consultants, builders, and legal representatives. Capital Square has redefined the west end of Perth, delivering high-quality commercial space and a dynamic public realm that contributes to the city's cultural and economic vitality.





# Identitywa – Improved Liveability and Robust Housing

**Client:** Identitywa

**Cost:** \$3m

**Role:** Superintendent and Project Manager

Proven Project Management proudly delivered two Specialist Disability Accommodation (SDA) homes in Cloverdale for Identitywa. Designed to meet specific SDA standards, the front home was built to Improved Liveability specifications, while the rear meets Robust design criteria. The homes were officially opened in January 2022 by Minister Don Punch MLA, who highlighted the importance of SDA in providing housing choice under the NDIS. Identitywa Board Chair Graeme Mander praised the collaboration with Proven, Gearing Construction, and Halton Design, saying it resulted in "two outstanding, high-quality houses" tailored to the residents' needs.



# Harmony Apartments

**Client:** Harvest Properties

**Cost:** \$15m

**Location:** Cockburn Central North

**Role:** Conditions Manager

Proven Project Management supported the successful delivery of Stage 1 of the Harmony Apartments in Cockburn Central. The project comprised 77 residential apartments and 350m<sup>2</sup> of commercial space. Proven initially secured both development and subdivision approvals for the site. Once Pindan was appointed as the design and construct contractor, Proven assisted with managing clearance conditions for the super lot subdivision. This included coordinating the Kentucky Court upgrade, addressing Main Roads WA road widening requirements, and facilitating developer contributions.





# Fieldgate Square Apartments

**Client:** ANZ Bank  
**Cost:** \$2.2m  
**Location:** Balga  
**Role:** Project Cost Control

Proven Project Management was appointed by ANZ to realign the project with time and budget parameters after construction was already 30% complete. Despite early challenges, Proven led rectification and design changes, revised programs, and cost assessments to ensure accurate progress tracking. The eight-apartment project was completed with a focus on overcoming difficulties and delivering a positive outcome that exceeded expectations.



Kingdom Apartments, South Perth



Riverwalk Apartments, Como



Cityscape on Swan, Rivervale

## Residential Experience: Laying the Foundation for Proven

Before Proven Project Management officially launched as a standalone business, its team was already delivering a series of complex, high-end residential developments under the Greg Rowe & Associates banner. These early projects played a pivotal role in shaping our expertise, establishing a solid reputation for delivering quality outcomes in the residential sector. They laid the groundwork for the creation of Proven and helped define our hands-on, solutions-focused approach that continues today.

### Kingdom Apartments, South Perth

A five-level luxury apartment development on a prime riverfront site. We managed the entire lifecycle, from securing over-height approvals to final strata titling. The project included high-end finishes, communal rooftop spaces, and coordination of specialist trades.

### Riverwalk Apartments, Como

Twelve executive apartments delivered on a challenging site. We led early feasibility reporting, project management, and superintendent duties, ensuring successful delivery and finance approval.

### Cityscape on Swan, Rivervale

This \$20m mixed-use development featured two towers, 18 luxury apartments, commercial offices, and major road upgrades. We were brought in mid-project to resolve contractual disputes, audit works, and manage completion. Our team also oversaw a complex strata titling process involving shared parking and cross easements.





# Australian Marine Complex

**Client:** DevelopmentWA

**Location:** Henderson

**Role:** Project Manager and Superintendent

Proven Project Management is proud of its long-standing partnership with DevelopmentWA, having successfully delivered a series of critical infrastructure upgrades at the Australian Marine Complex (AMC) in Henderson. These projects have played a pivotal role in expanding the Common User Facility's (CUF) capabilities, ensuring it remains a world-class hub for marine, defence, and resource industries.

## Vessel Transfer Path Upgrade

Cost: \$8.1m | Completed: April 2022

Proven led the delivery of a major upgrade to the CUF transfer path, enabling safe movement of larger naval vessels, including Anzac Class and future Hunter Class frigates (up to 10,000 tonnes). Delivered under a traditional lump sum contract, the project required close coordination with users and facility managers to ensure minimal disruption during live operations.

## Wharf Extension – Berth 1

Cost: \$31m | Completed: 2023

This 280m extension of Berth 1 allows two major naval frigates to berth simultaneously. Proven managed the project through both design and construction, ensuring seamless integration with ongoing naval repair works. Proven was also appointed to oversee design planning for the future Finger Wharf Extension (270m x 50m), to increase submarine berthing capacity.

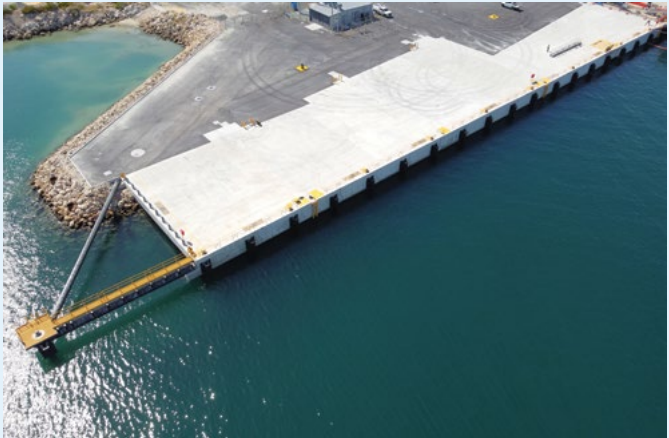
## AMC2 Deck Infill and Maritime Bollards

Cost: \$8m | Completed: December 2023

Following the Wharf Extension, Proven delivered the AMC2 project, expanding serviceable wharf deck area by infilling a section of the existing structure. The project featured complex piling, precast construction, and a heavy-duty topping slab. It was successfully completed ahead of schedule and within budget.



Vessel Transfer Path Upgrade



Wharf Extension – Berth 1





# Dardanup's Library and Administration Building

**Client:** Shire of Dardanup  
**Cost:** \$20m  
**Location:** Dardanup  
**Role:** Project Manager

Proven Project Management is proud to have played a key role in delivering the Shire of Dardanup's visionary Library, Administration, and Community Building. Completed in 2024, this award-winning, all-timber facility blends architectural innovation with sustainability, achieving a 2024 UDIA WA Sustainability Award and dual IPWEA accolades.

Working closely with the Shire, Kent Lyon Architects, Peter Hobbs Architects, and Perkins Builders, Proven oversaw the project through design, construction, and handover in just 12 months. The centre integrates a library, council chambers, and the Mick Bennett Make-It Space, a future-ready hub promoting STEAM education and creativity.

This landmark project stands as a model of regional collaboration, carbon-conscious design, and community-focused delivery, proving what's possible when innovation, resilience, and shared vision come together.





# McLarty Explosives Reserve

**Client:** LandCorp  
**Cost:** \$3m  
**Location:** Waroona  
**Role:** Superintendent

Proven Project Management was appointed as Superintendent for the delivery of a new secure operational facility for the Department of Mines near the Waroona townsite. The project included a 200m<sup>2</sup> transportable office and a 300m<sup>2</sup> workshop, constructed onsite to support the Department's regional operations.

Delivered on time and to specification, this project reflects Proven's capability in managing regional infrastructure works, balancing the complexities of remote delivery with the rigour of government-led compliance and stakeholder expectations.



# CARTER LANE

**Client:** City of Subiaco  
**Cost:** \$6m  
**Location:** Subiaco  
**Role:** Design Management and Project Manager

Proven Project Management led design and project management for this 1.2 ha infill development, delivering 11 residential lots, two mixed-use sites, and public open space. Situated in the sensitive Subi Centro area, the project required extensive community and stakeholder engagement to address local concerns and integrate seamlessly with the existing streetscape. Proven facilitated multiple design iterations to align with the City's vision and MRA objectives. Civil subdivision and demolition works, including asbestos removal, were completed successfully, with titles issued.







## SGS Dampier – Remediation & Demolition Works

**Client:** SGS Australia

**Cost:** \$3m

**Location:** Dampier

**Role:** Project Manager

Proven Project Management was engaged by SGS Australia to manage the remediation and demolition of their long-standing Dampier site. Despite challenges such as contaminated soil, the site was successfully restored and handed back to the Pilbara Port Authority within budget in 2024.

## Wallis Drilling Headquarters

**Client:** Wallis Drilling

**Cost:** \$25m

**Location:** Hazlemere, WA.

**Role:** Project Manager and Superintendent

Proven Project Management is delivering the new Hazlemere headquarters for Wallis Drilling, consolidating operations into a single, purpose-built facility. The development includes a 2-storey office, three large workshops, washdown bays, laydown areas, EV parking, staff amenities, and wastewater systems.

Engaged since project conception in 2020, Proven has overseen design, consultant coordination, tender, and construction. Collaborating with Rowe Group, Proven is ensuring all approvals are secured while maintaining project momentum.





## The Leeuwin @ Witchcliffe

**Client:** Ablestar Holdings Pty Ltd

**Cost:** \$20-25m

**Location:** Witchcliffe

**Role:** Project Manager



Stage 1



Stage 2

## Mojo Urban Living

**Client:** Westpro Management

**Cost:** \$29m

**Location:** Cockburn Central

**Role:** Project Manager

Proven Project Management is proud to lead the delivery of Mojo Urban Living, an innovative medium-density estate in Cockburn Central. Located near the train station and Gateway regional centre, the project includes over 230 lots designed for townhouses and small-lot housing.

A showcase for new urban living, the project has been guided by a collaborative design approach with key builders to ensure high-quality, fit-for-purpose outcomes. Proven has overseen the delivery of two major parks, elements of the regional drainage network, and the upgrade and widening of Muriel Court, helping shape a vibrant, connected community.





## A Shared Vision with M/Group

Our long-standing relationship with M/Group is built on a shared commitment to creating thoughtfully planned residential communities. From early acquisition advice to project delivery, Proven has been a trusted partner in multiple land developments.



### The Wedge

**Client:** M/Group  
**Cost:** \$12m  
**Location:** Wellard North  
**Role:** Project Manager

Following our early involvement in rezoning and structure planning, Proven guided M/Group through acquisition and delivery of this 116-lot community. The project includes a childcare centre, wetland interface coordination, and a landscaped park. Stage 1 also delivered key civil upgrades including the estate entry and Bertram Road intersection.

## Atop Beelihar

**Client:** M/Group  
**Cost:** \$16m  
**Location:** Beelihar  
**Role:** Project Manager

Proven supported M/Group from acquisition through to completion of this 167-lot subdivision. Delivered in six stages, the estate features four public open space areas, remediation of uncontrolled fill, and major retaining works shaped to the undulating terrain. The project reached completion in February 2022.





# Shaping Land, **Creating Communities**

Since Proven Project Management was established in 2015, our team has delivered a wide range of land development projects across WA, from boutique infill lots to large-scale greenfield estates. With strong relationships across engineering, environmental, and construction disciplines, we deliver coordinated, value-driven outcomes from concept through to titles.

Our experienced team brings local insight, technical oversight, and a proactive approach to approvals, design, risk, and contractor management. We focus on delivering well-connected, sustainable places while unlocking each site's full potential.



## Colli Hardware Site Redevelopment, **Kelmscott**

This \$5 million infill project transformed a former hardware store into a boutique 47-lot residential estate with landscaped parkland. Proven coordinated all planning, environmental, and design approvals, helping bring diverse and affordable housing to Perth's foothills.

## Kenby Heights, **Wandi**

Kenby Heights delivered 71 residential lots, parkland, and road upgrades in Wandi. Proven oversaw the design through to construction and coordinated shared service delivery with neighbouring developers. Titles were rolled out in three stages from a single construction program.



## Maudes Rise, **Hammond Park**

Hammond Heights was a 34-lot residential estate with integrated public open space and interface works adjoining a conservation category wetland. Proven managed the project from design through to delivery, with construction completed in a single stage in October 2024.





# Built on Proven Relationships

Over the years, our clients have trusted us to deliver complex projects with care, precision, and integrity. Here's what some of them have to say about working with Proven Project Management.

## M/Group

BUILDING PROPERTY VALUE

*"Proven have provided M/Group the backbone to grow its land development arm by providing a hands on full delivery project management service across residential estates in Secret Harbour, Wellard and Beeliar. Proven's attention to detail, problem solving, stringent cost management and negotiation skills have ensured projects weather unforeseen hurdles and maximise every opportunity to maintain profitable and high quality outcomes. We look forward to continue this relationship on our projects into the future."*

**John Wroth**  
Director



*"Proven have been excellent at dealing with both our internal and external stakeholders and as a result instrumental in; ensuring construction projects are completed on time, increasing communication between departments of the 7-Eleven business, increasing confidence in relationships with 7-Eleven's group of builders, and building internal confidence in site delivery objectives that the 7-Eleven Operations Team can rely on. Proven Project Management provide a professional service using practical and informative reporting tools. They are always prompt with responses and ready to assist."*

**Regan Harray**  
WA Property Development Manager



*"Mojo Urban Living has work with Proven Project Management for some 5 years now on our Cockburn Central North area small lot subdivision. The Proven project team were instrumental in the early stages of conceptualising the subdivision plans and coordinating the multitude of tasks necessary to obtain approvals to see the complex stage 1 Civil and related works delivered some 3 years ago. We are pleased to be several years down the track now and to continue successfully working with Proven to recently deliver the 5th Stage and some 200 lots in total. Throughout the journey we have found Proven to be reliable, thorough and nimble in project management for our land subdivision."*

**Travis French**  
Director





*"Proven's extensive retail experience was key in completing all tasks and successfully delivering both projects with each providing complexities throughout their durations. Importantly, following on from Banksia Grove and Butler Central, Fabcot Pty Ltd appointed Proven to deliver our Mt Pleasant project which consists of a Woolworths store, upper level medical and commercial tenancies and 2 levels of basement parking."*

**Jarrad Wilson**  
Regional Development Manager



*"Georgiou Group has been engaged by Development WA for a Contract to upgrade a vessel transfer path within Australian Marine Complex in Henderson in January 2021."*

*Proven Project Management (PPM) have been appointed as a Superintendent's representative to project manage this project.*

*Georgiou Group has worked closely with the PPM's Project Manager to ensure that the project was completed in timely manner, in accordance with the contract specification and within the client's budget.*

*PPM have provided exemplary management with a complex and difficult project ensuring that surrounding business experience minimal impact by the Georgiou Group works and vice versa.*

*Examples, like managing various project consultants when relevant designs had to be amended due to on site changes or liaison with various stakeholders within the facility to keep everyone informed of site activities are couple of major testimonies to PPM on this project.*

*PPM has managed well the commercial aspect of the project ensuring that relevant commercial dates have been met.*

*Georgiou Group will be happy to be a reference for PPM works should this be required."*

**Sinisa Rakovic**  
Project Manager



*"I am extremely pleased with the service that Proven Project Management has provided and would strongly recommend the appointment of Proven Project Management to other organisations that may be contemplating major building projects accordingly. This is based on the high level of professional service provided in delivering our Midland Saleyards project which (as at the date of this letter) is under construction and is progressing as planned."*

**Paul Lampropoulos**  
General Manager



*"Working with Proven was one of the best decisions made at the outset of the DFO Perth project. The team approached the job as if it were their own home and own money, persistently pursuing Vicinity's best interests throughout the project. This approach helped Vicinity to achieve significant contract savings allowing the final product to be not only perfected but delivered on time, with all 113 tenancies open for trade day one."*

**Sally Ockenden**  
Senior Development Manager



# GET IN TOUCH

To discuss your next development, contact us today or visit our website to see more of our work.



SEE ALL  
PROJECTS

# Proven.

Project Management



**p** (08) 6467 8200  
**e** [info@provenpm.com.au](mailto:info@provenpm.com.au)  
**w** [www.provenpm.com.au](http://www.provenpm.com.au)  
**a** 3/369 Newcastle Street, Northbridge 6003

*Karrinyup Shopping Centre*



Although all care has been taken on the compilation of this document Greg Rowe Pty Ltd and all parties associated with its preparation disclaim any responsibility for any errors or omissions. The right is reserved to change this document at any time. This document does not constitute an invitation, agreement or contract (or any part thereof) of any kind whatsoever. Liability is expressly disclaimed by Greg Rowe Pty Ltd for any loss or damage which may be sustained by any person acting on this document.

© 2025 Greg Rowe Pty Ltd All Rights Reserved. Copyright in the whole and every part of this document belongs to Greg Rowe Pty Ltd and may not be used, sold, transferred, copied or reproduced in whole or in part in any manner or form or in or on any media to any person without the prior written consent of Greg Rowe Pty Ltd.



VISIT OUR  
WEBSITE